
Ludmila Pawlowska

Three-dimensional possibilities

Ludmila Pawlowska moved to Sweden from Russia in 1993. A lot has happened in her work since then. One of her first surprising encounters was with the Swedish landscape. The variety of plants, the colors and the light presented her with inspirational themes to develop. After previously having created realistic renditions, she now created flowers as free interpretations of her inner feelings.

Ludmila's mother died suddenly in 1997 and she was able to work through her sorrow with the help of her painting. This short step between life and death sharpened Ludmila's awareness of the existential issues of life and her subjects took on an ethereal aspect in the form of icons.

During the summer of 2001 she worked together with several sculptors who worked with limestone from Kinnekulle. This exchange of knowledge and her discussions with them gave Ludmila the incentive to begin working three-dimensionally using a combination of painting and sculpture. Ludmila's reliefs do not realistically represent any events or figures; rather they make sentiments and feelings visible.



The titles are meant to guide the observer, but they also offer freedom of interpretation using one's own reference points. With titles such as "The Creation", "The Annunciation" and "The Crucifixion", one can get a sense of Ludmila's intimacy with the thousand-year-old tradition of the icon. In her easel paintings, Ludmila uses such techniques as acrylics, water colors and oils. In the reliefs, she combines these paints with other materials.

The point of departure is a plywood box whose proportions and angles accommodate the composition. To give structure to the surface, she uses a structure paste mixed with acrylic paint. This becomes the foundation for the attributes that give the subject character. Bird feathers suggest the presence of angels. Attributes of the coast and the sea are shells, driftwood and small, wave-polished pebbles. Every year Ludmila pays

a visit to Klädesholmen on Sweden's west coast in order to comb the beaches for items to use in works such as "Riches of the Sea" and "Water is Life". In other works, she uses fossils from Kinnekulle whose colors and age fire the imagination. **Three-dimensional possibilities** this is what Ludmila Pawlowska calls this latest phase of development in her artistry.

Bertil Lundgren, art critic and former director of Rörstrands Museum, Lidköping/Sweden.

Three-dimensional possibilities - mixed media

Three-dimensional possibilities
mixed media on plywood



SCANDINAVIAN

Nordic nature and landscape as inspiration



INCLUSIONS

precious stone/metal/wood as art object



ICONS IN TRANSFORMATION

Russian medieval icon tradition as inspiration
source

on plywood

Scandinavian

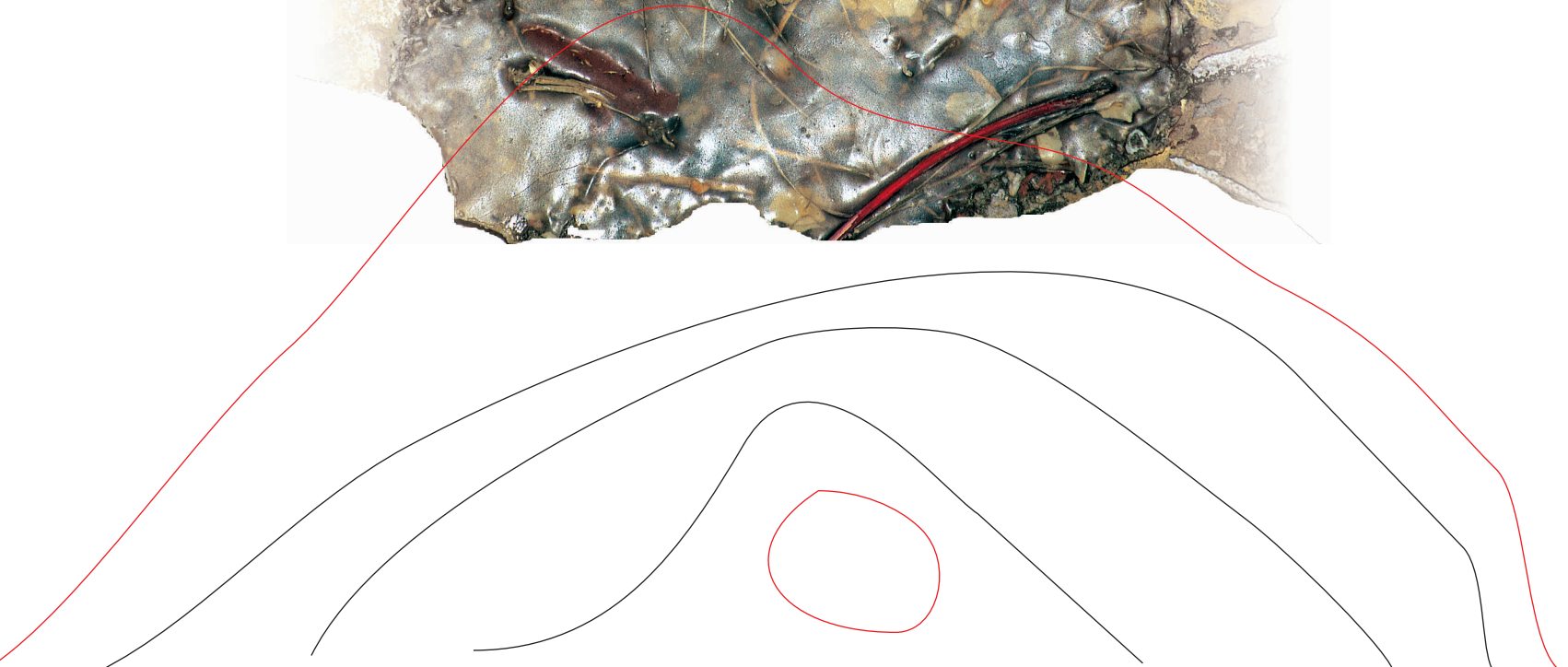
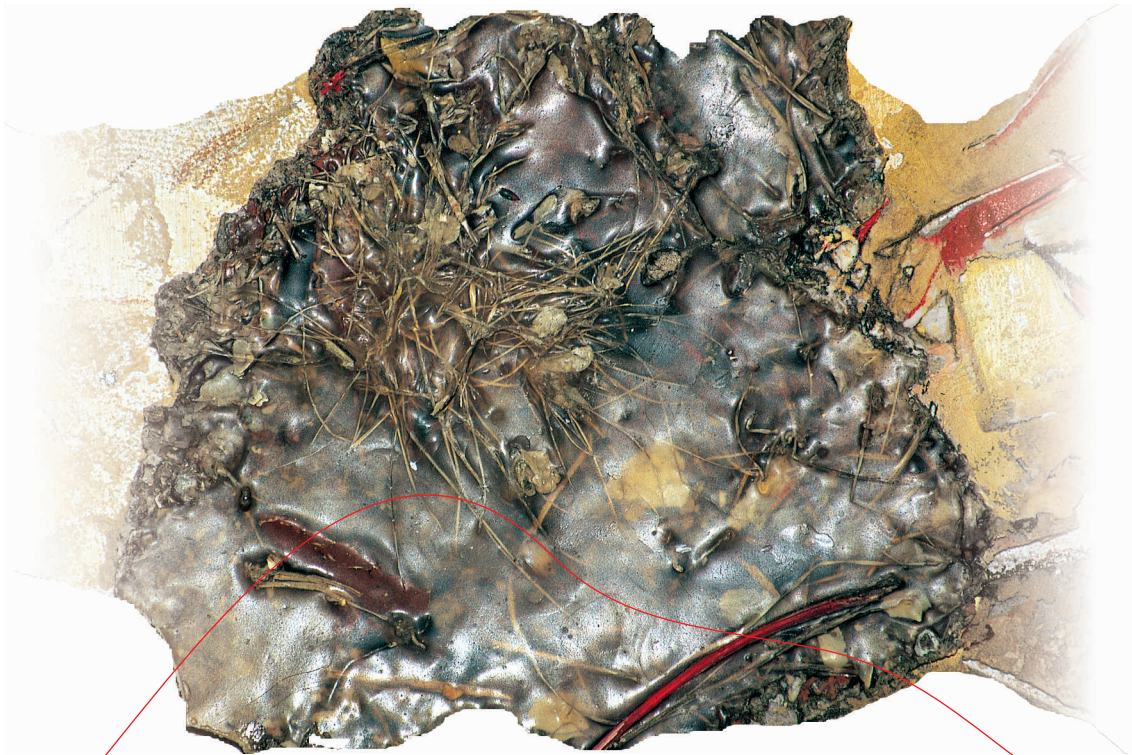
Scandinavian





| 1 |

In the middle of Nature 40cm x 40cm x15cm

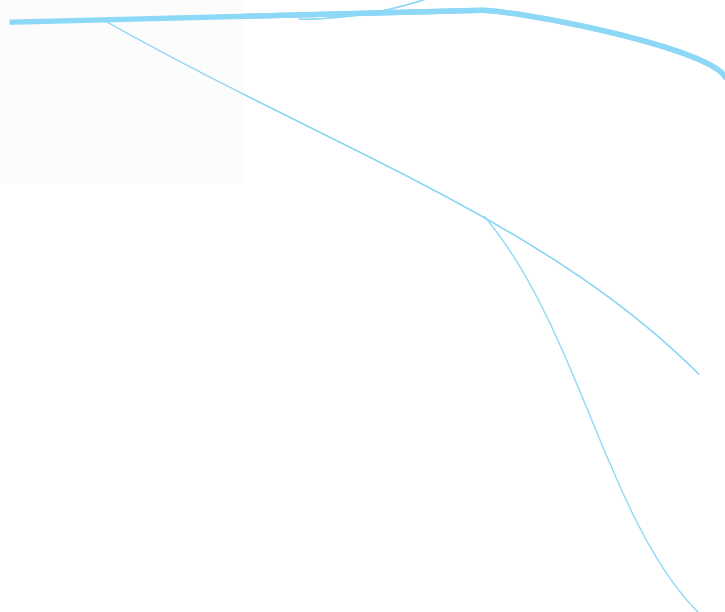
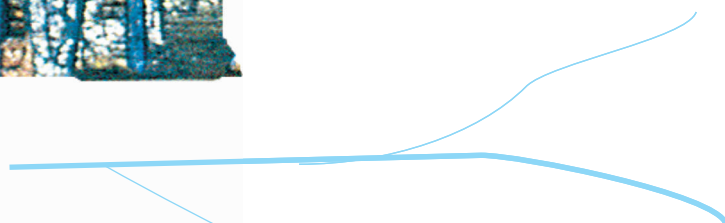








To understand absolute perfection
90cm x 90cm x 15cm x 90cm x 90cm





Details from a different art works on a theme "Scandinavian"

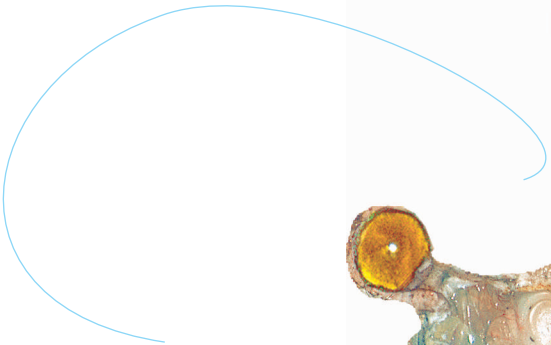




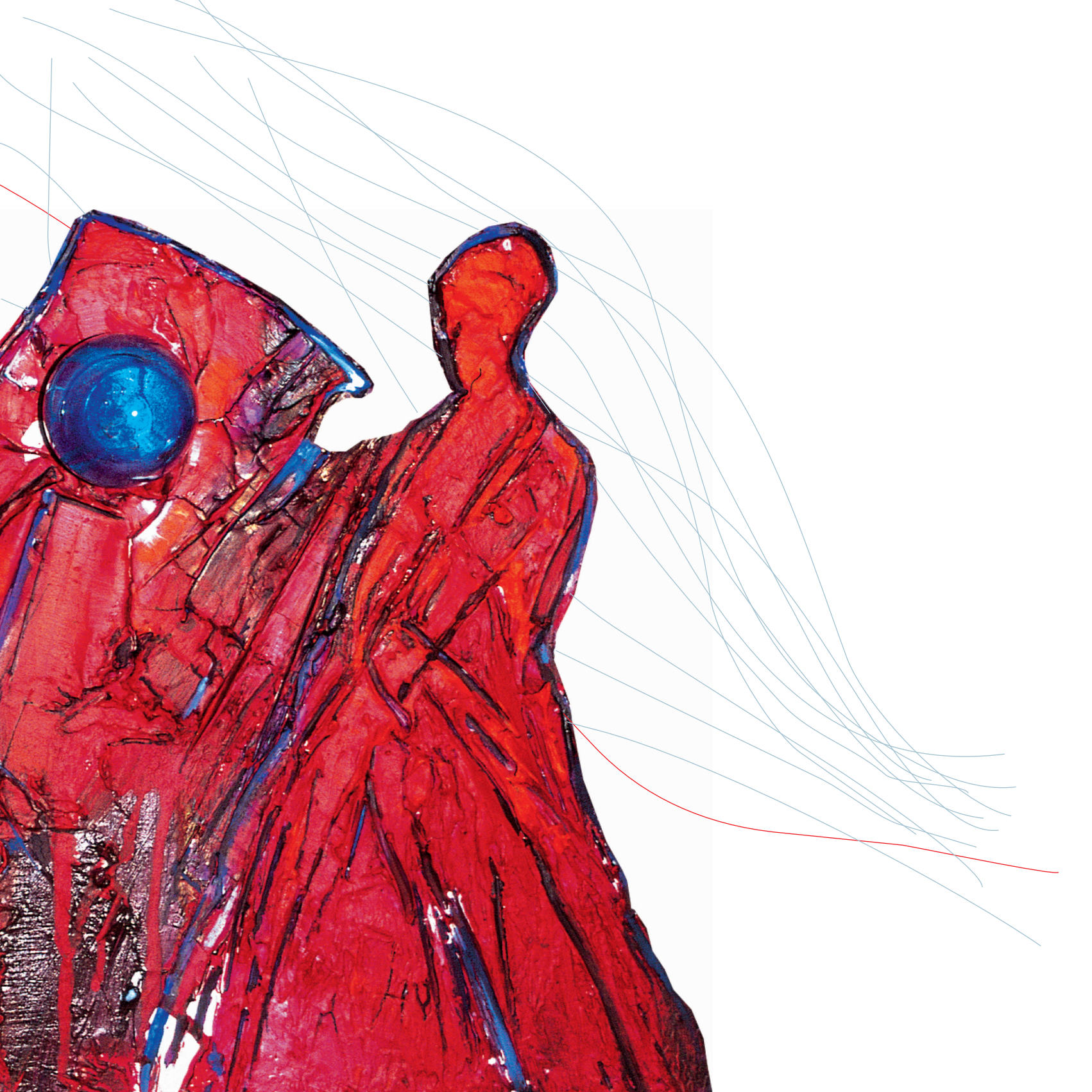


Inclusions

Inclusions







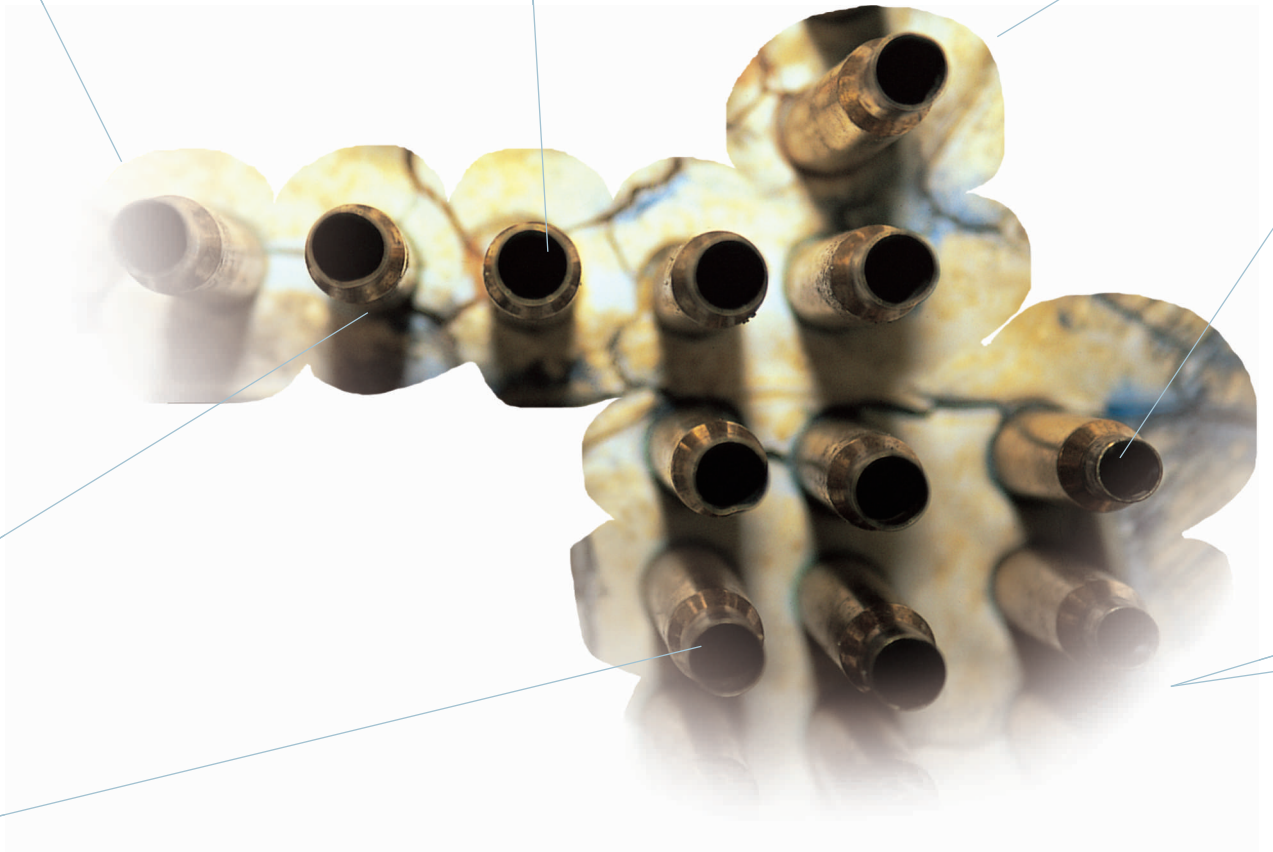








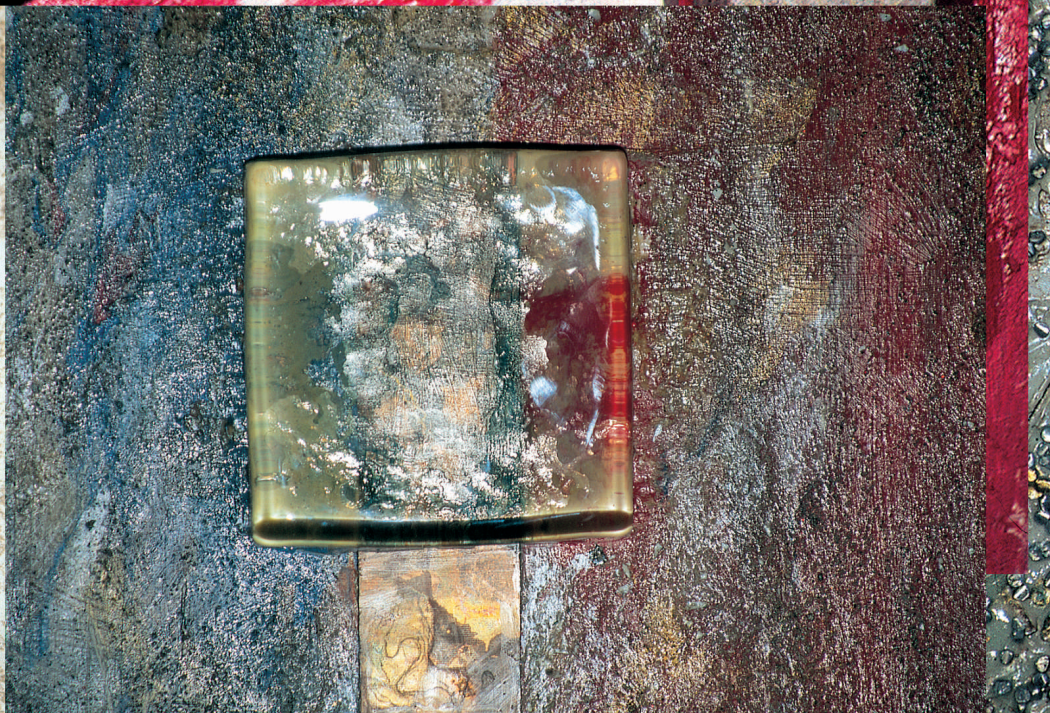


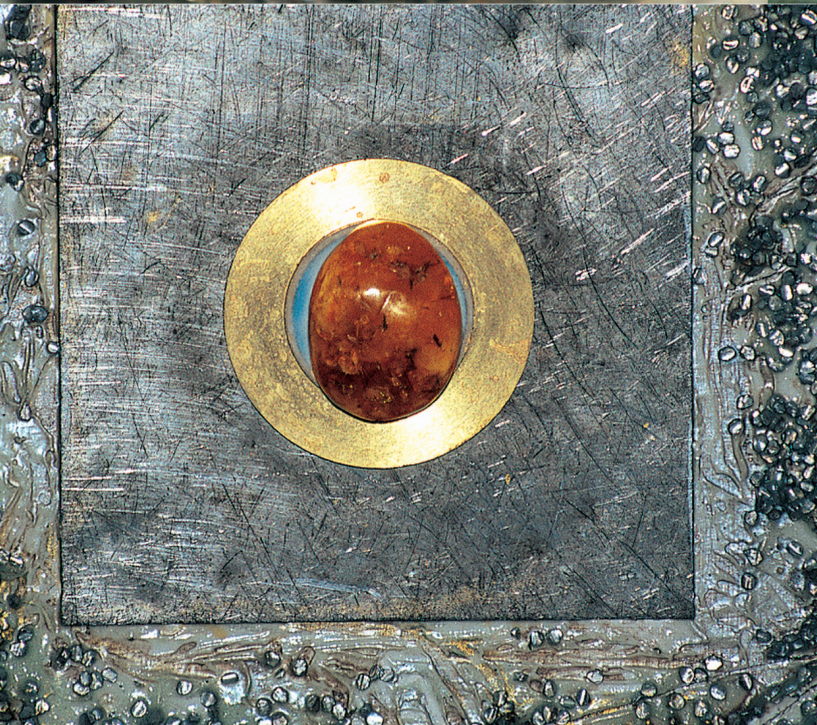








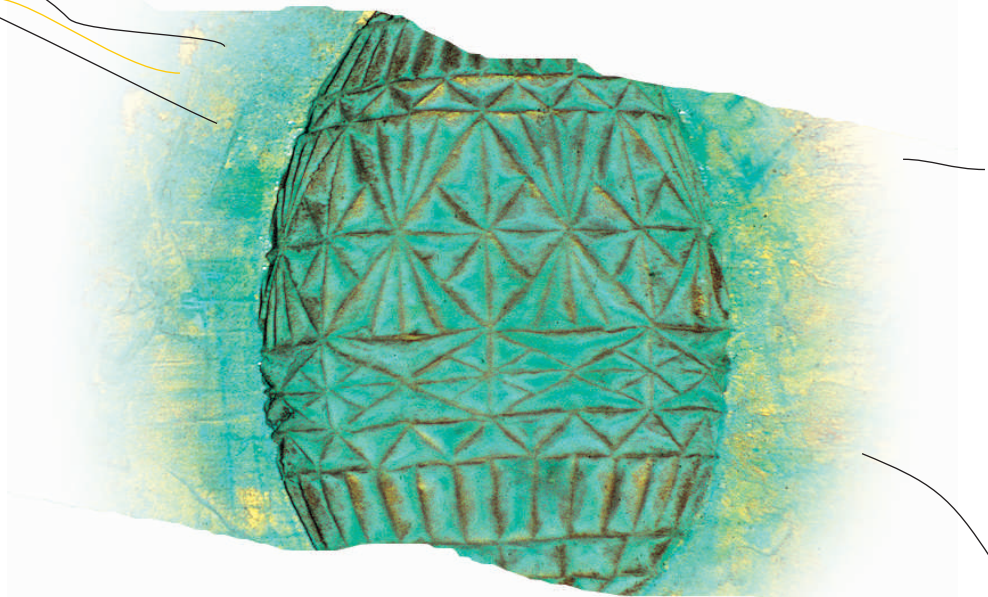




Details from a different art works on a theme "Inclusions"

Icons in transformation

Icons





| 11 |

Beginning of a new life 60cm x 60cm x 15cm





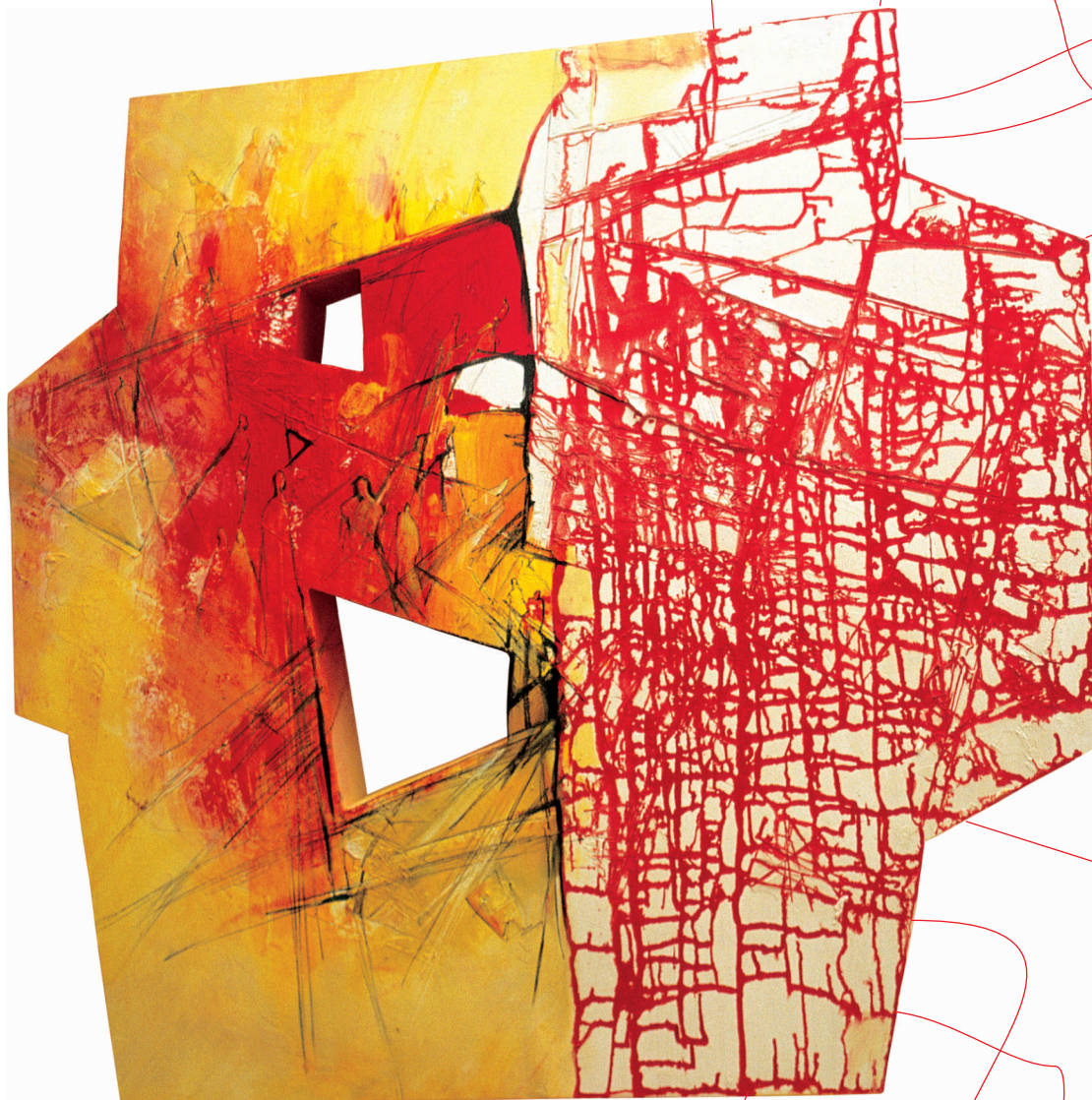




| 13 |

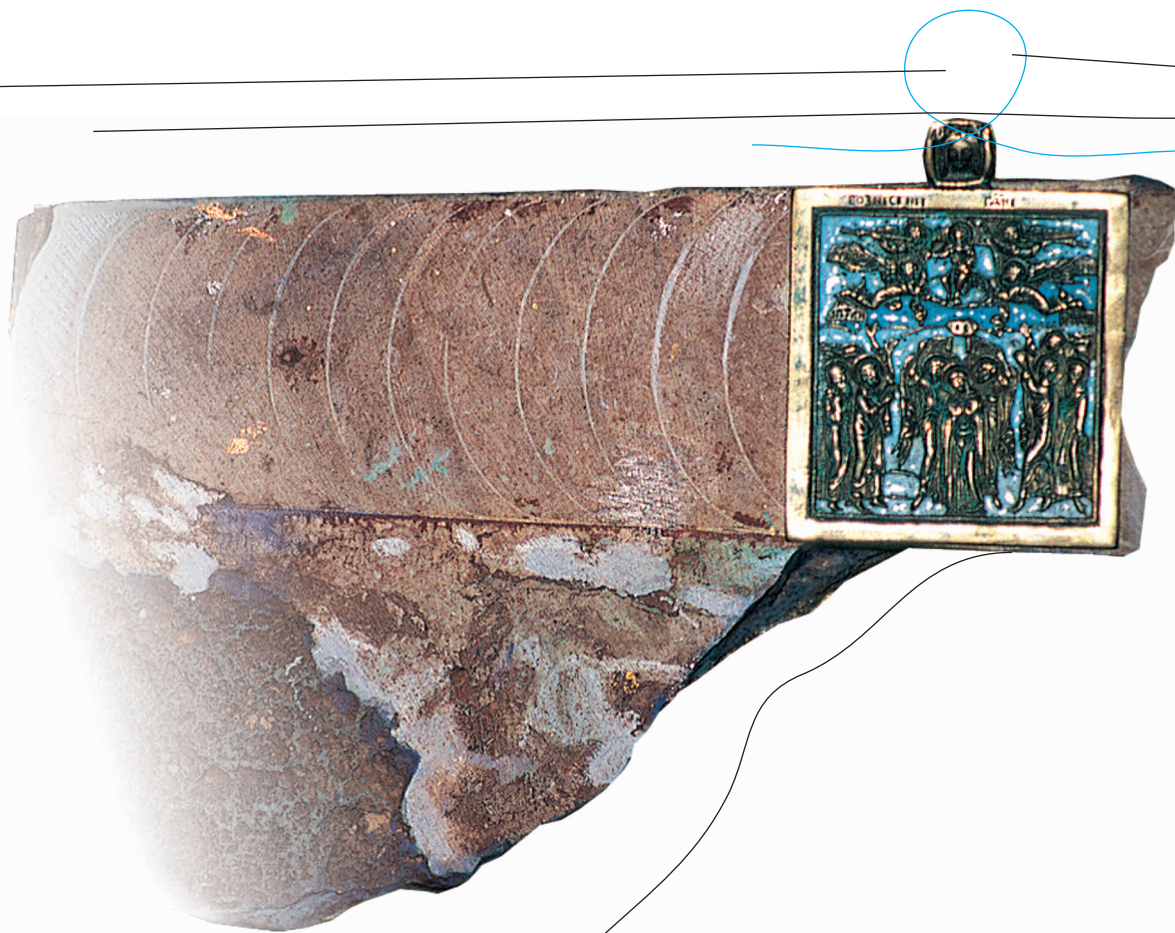
Crucifix 40cm x 40cm x 12cm



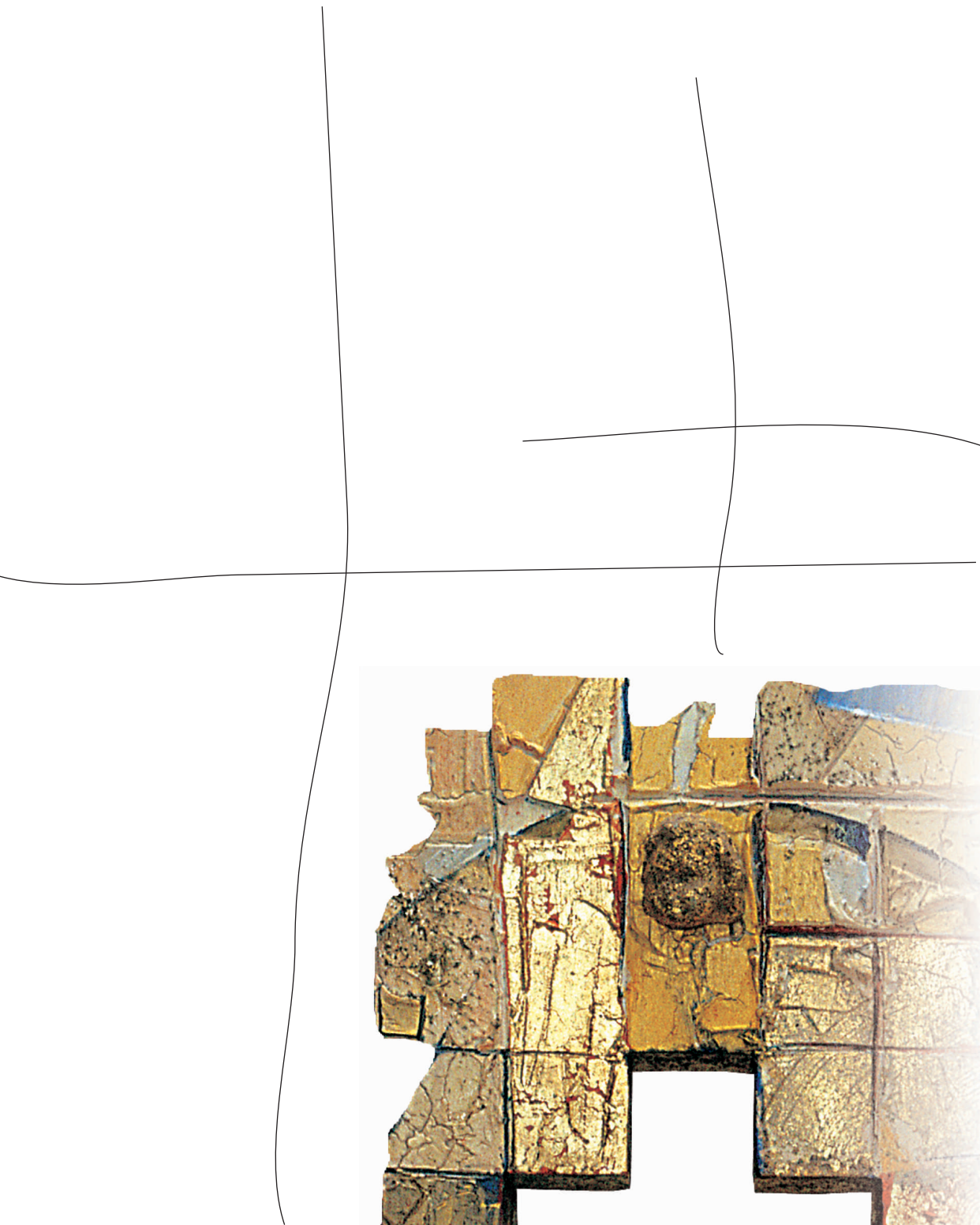


|14|

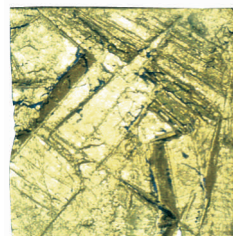
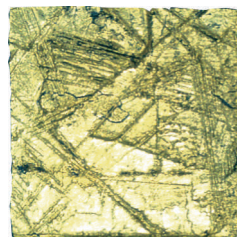
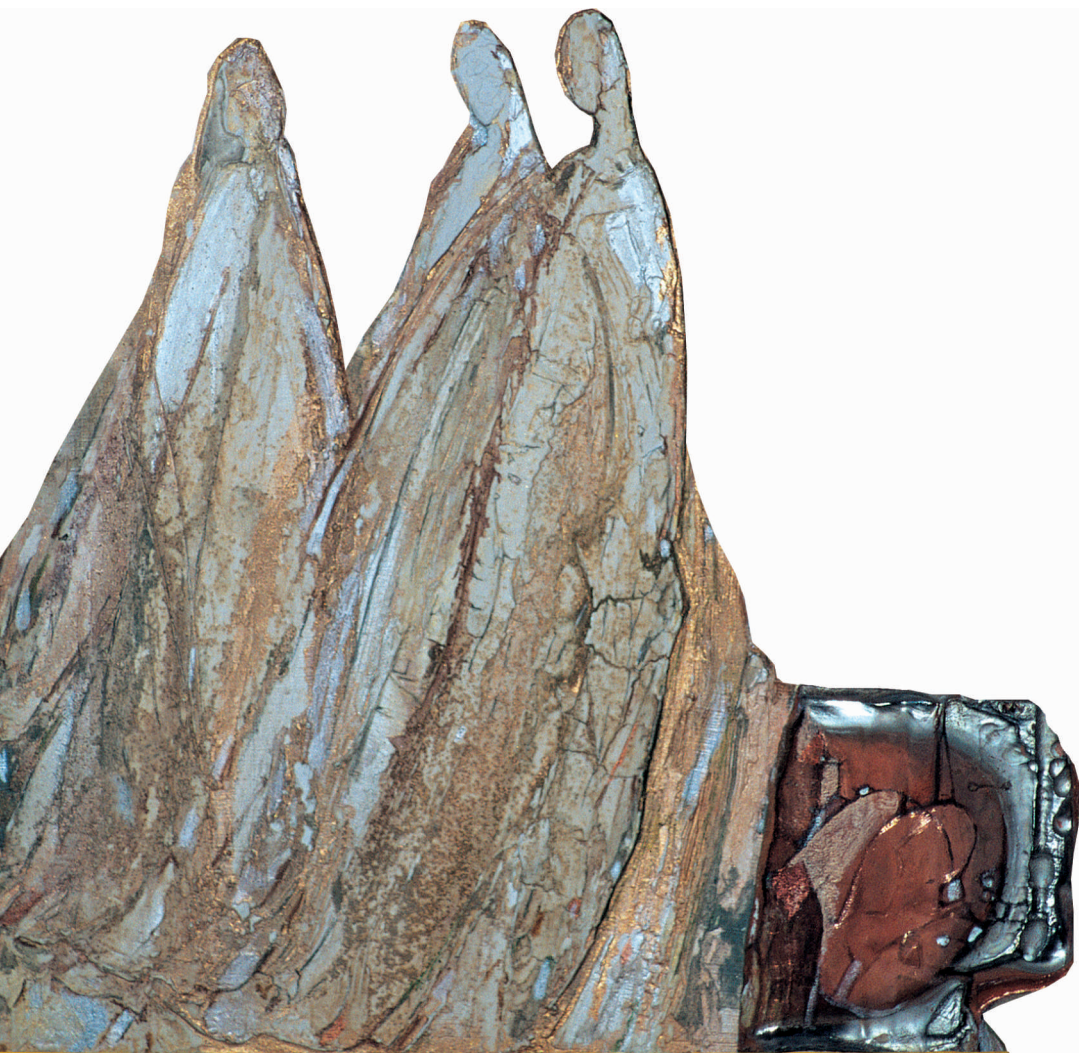
Life's labyrinth 120cm x 120cm x 15cm





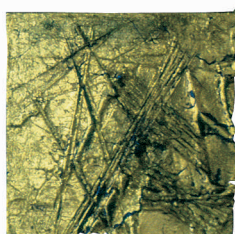
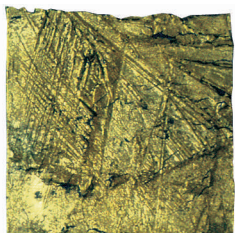






Details from a different art works on a theme

“Icons in transformation”



BRUNNEN

Amsterdam

Antwerp

Arvika

Barcelona

Basel

Berlin

Brussels

Copenhagen

Fredrikshavn

Gothenburg

Hamburg

Herning

Kolding

London

Jevnaker

Milan

Munich

Namur

Örebro

Oslo

Paris

Rome

Rotterdam

Skövde

Stockholm

Warsaw

Venezia

Vienna

Wiesbaden

Visby

Zurich

Ludmila makes Art in which femininity, religion, dramatic expression and esthetica beautifully come to harmony. We exhibit gladly with her work because it well connects on to the mission of Gallery Women in Arts.

Emiel Landkroon
Gallery Women in Arts, Arnhem/Netherland

Intense colour compositions and a special choice of materials form the base of Ludmila's successful works of art. She can interpret subjects in her own way and so she shows her talent and character. An unique style of work with a timeless beauty is born.

Hielkje Brunsting-Schaafstra
Galerie Brunstingerhof, Beilen(Netherlands)

Ludmila Pawlowska is a gifted artist. Inspired by the world of icons, she creates a material and tangible realm within her poetic and spiritual paintings. Her motifs are figurative, abstract or lyric abstract renderings of existential and religious themes. Using a wide plethora of colours, ranging from dark drama to the poetry of spherical light and ease, she consistently express herself with high artistic precision and a remarkably concrete sensuality.

Elise Toft
Galerie Elise Toft, Kolding/Denmark

When Ludmila Pawlowska presented for the first time some of her works in our gallery, I was very enthusiastic and inspired of the composition of her three-dimensional "wall-objects". The painting of the plywood-objects is so very well designed, that the wood heaviness goes smoothly through the fine composition into the background.

Christine Rothe
Galerie 40, Wiesbaden/Germany

What is exciting about Ludmila's unique vision and painting is the use of image and esoteric materials to such an elegant finish. She employs fossils, precious and semi-precious minerals and metals with a thick and thin texture of various kinds of paint. The results applied to plywood boxes are like relief sculpture and often bring to mind the icons of her former land. Ludmila is a special talent who has made a fine career which is much appreciated in Europe. She is a very fecund and prolific artist.

Harold Werner Rubin
Rivington Gallery, London/Great Britain

ITALY

Galeria Cortina Arte
Via Mac Mahon 14
I-20155 Milano
Tel. +39 02 33607236
Fax. +39 02 34536329
e-mail: cortinaarte@tin.it
www.cortinaarte.it

NETHERLAND

Galerie Women in Arts
Janssteeg 10
NL-6811 GC Arnhem
Tel. +31 26 3510805
e-mail: e.landkroon@chello.nl

NORWAY

Galleri Roenland
Sundgt. 3
N-3510 Hønefoss
Tel. +47 32 140200
Fax. +47 32 140201
www.roenland.no

DENMARK

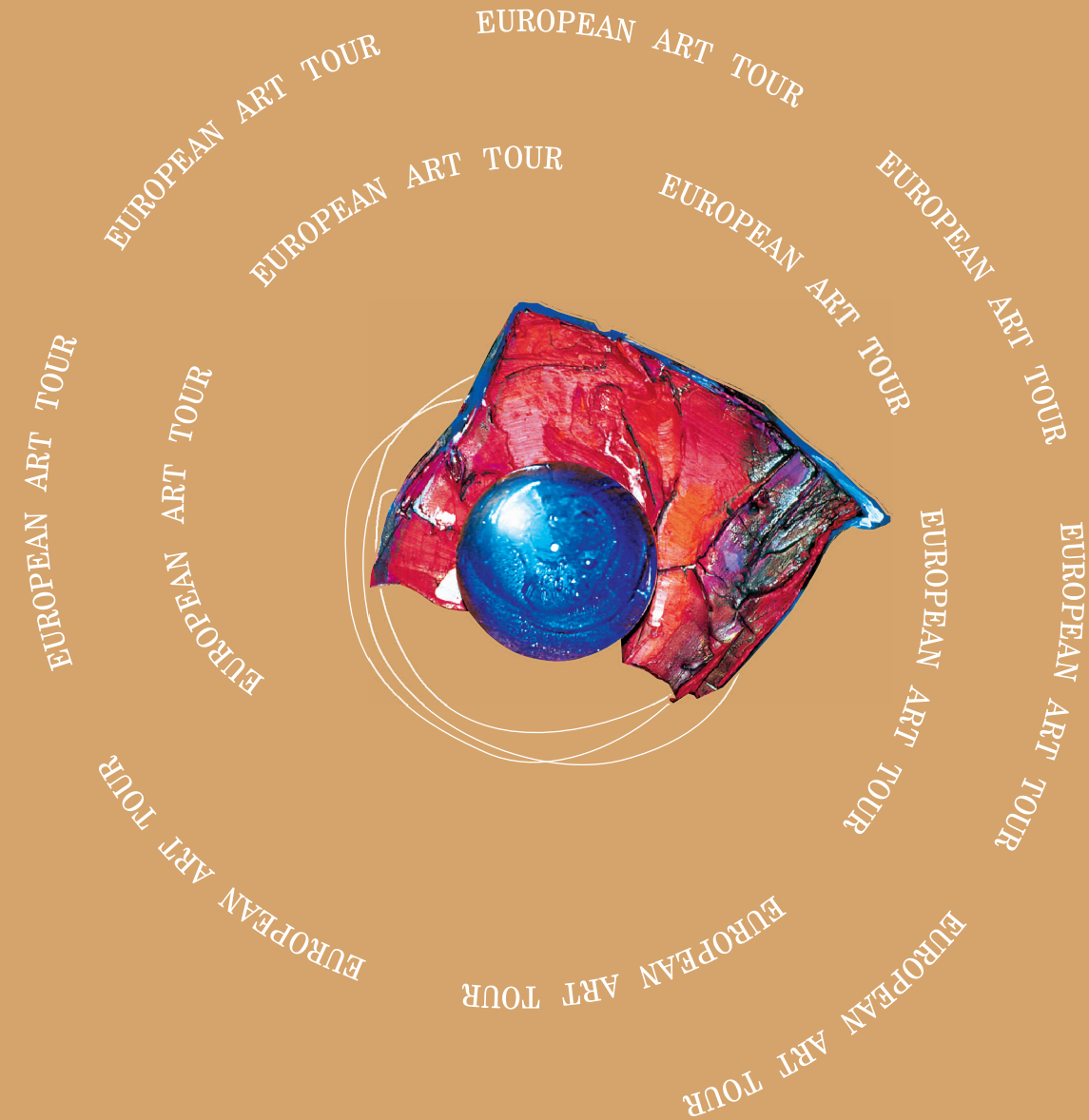
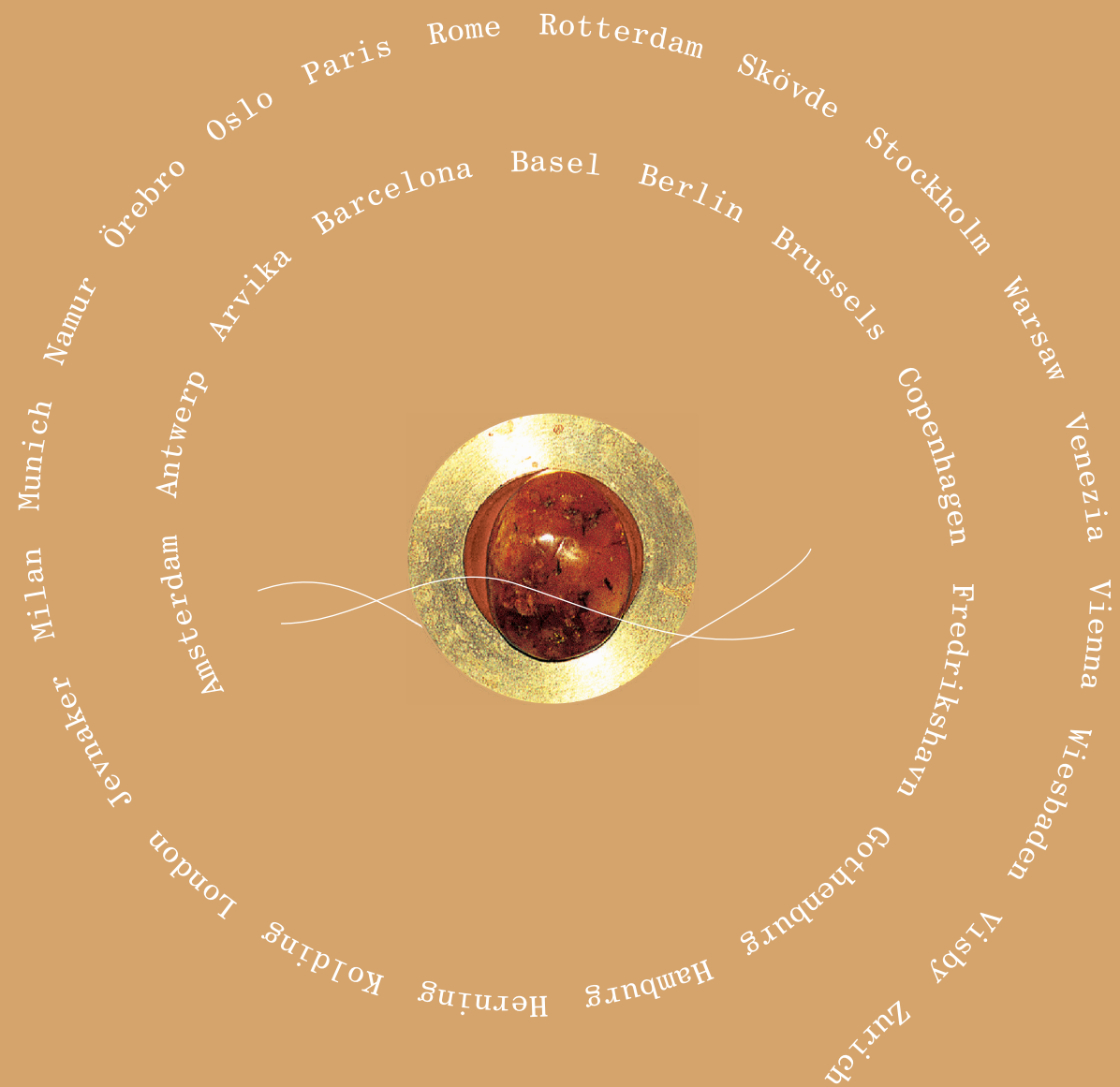
Galleri Elise Toft
Låsbygade 58
DK-6000 Kolding
Tel/Fax +45 75507855

FRANCE

Galerie Vivendi
28, place des Vosges
F-75003 Paris
Tel. +33 1 42769076
Fax. +33 1 42769547
e-mail: serge@vivendi-gallery.com
www.vivendi-gallery.com

GERMANY

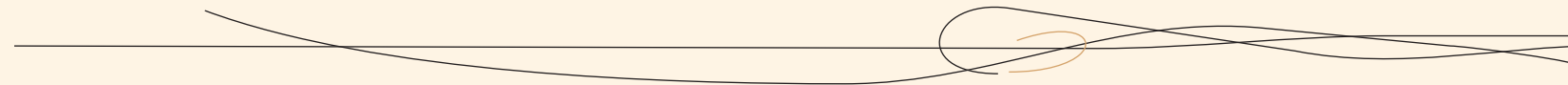
Galerie 40
Bahnhofstr. 40
DE-65185 Wiesbaden
Tel. +49 611 379967
Fax. +49 611 39074
e-mail: ch.r@galerie40.de
www.galerie40.de



EUROPEAN ART TOUR

Amsterdam
Antwerp
Arvika
Barcelona
Basel
Berlin
Brussels
Copenhagen
Fredrikshavn
Gothenburg
Hamburg
Herning
Kolding
London
Jevnaker
Milan
Munich
Namur
Örebro
Oslo
Paris
Rome
Rotterdam
Skövde
Stockholm
Warsaw
Venezia
Vienna
Wiesbaden
Visby
Zurich

EUROPEAN ART TOUR is made in cooperation with
Hilton International
OK/Q8
Paroc
Scandic
Stena Line
Vänerply



Copyright: Ludmila Pawlowska 2004

Text: Bertil Lundgren, Erik Anfinssen, Emiel Landkroon,
Hielkje Brunsting-Schaafstra, Elise Toft,
Christine Rothe,
Harold Werner Rubin

Photographs: Andrzej Tyszko (Ludmila Pawlowska photo)

Layout: Andrzej Saganowski, Ewa Gnatkowska

Colour separation by: Ewa Gnatkowska

Printed by: MuruGumbel

I especially wish to thank Andrzej Tyszko
and Ewa Gnatkowska for their collaboration.